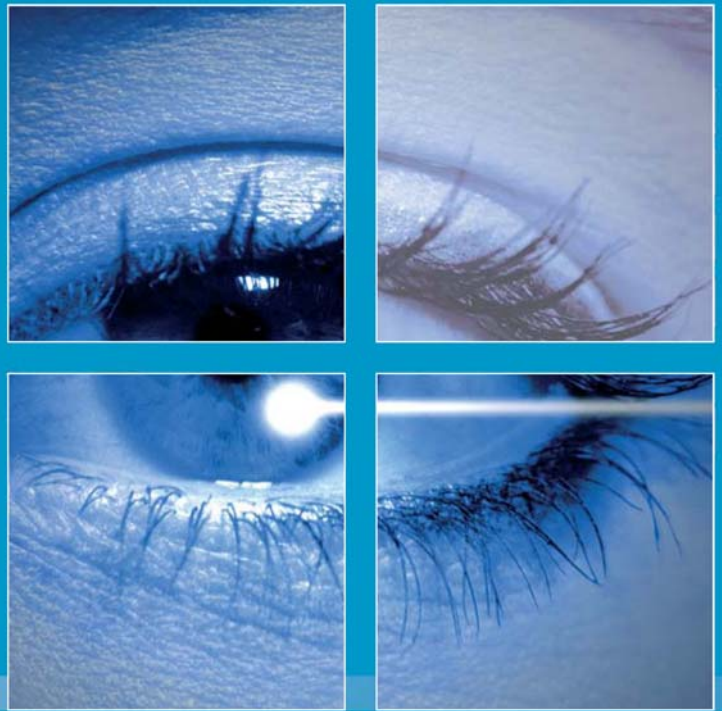


SMI Server Maps Option



A03003

SMI Server, the integrated security system for managing your sites, completes the Site Master-Industry (SMI) range. It incorporates:

- A Microsoft® SQL Server database
- Web interfaces
- A new Man/Machine interface
- Development under Microsoft® .net

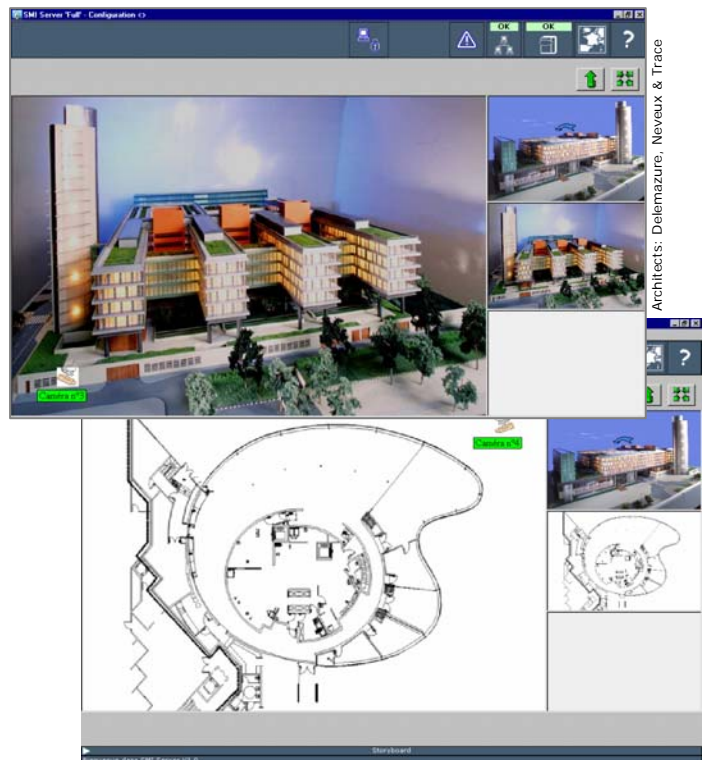
Maps

The "Maps" option in SMI Server lets you supervise all the system's elements in a graphic and user-friendly interface (displaying alarms, status, sending remote commands, etc.).

- Access
- Intrusion
- Alarms / Technical faults
- Fire Alarms
- Video

To supervise the installation with maximum effectiveness and minimum action on the part of the operators.

Simple and intuitive navigation permits optimum exploitation of the installation.



Architects: Delémazure, Neveux & Tracé



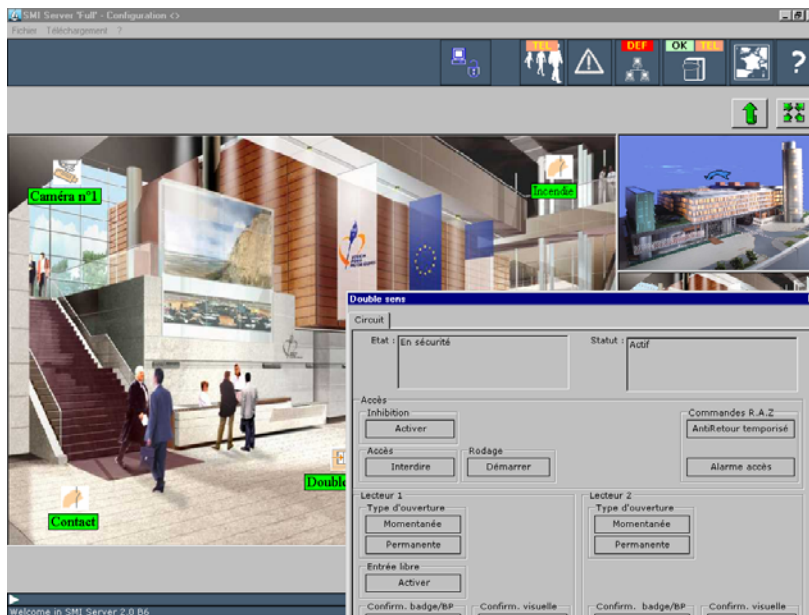
10011001010111101001101



This visual information system, based on the graphical animation of block diagrams, lets you control and monitor the various components of the system in real time with maximum visibility.

The "Maps" option, accessible on all SMI Server's workstations lets you:

- Import backgrounds in several formats
- Import/Create customized symbols
- Create a tree structure suited to the application
- Match status/colours definable by the operator
- Display the map automatically when an alarm/fault occurs according to the priority of the event
- Issue commands to the various elements in the system, directly from the block diagrams
- In association with a video system:
 - Automatically display a video vignette of the camera linked to the element posting an alarm
 - Display from the camera selected by the operator



Item number

A19650

This document is the exclusive property of Gunnebo Electronic Security, a company belonging to the Gunnebo security group. All reproduction is strictly prohibited. Gunnebo Electronic Security reserves the right to make changes without notice. The brands referred to in this document belong to their respective owners. Copyright © Gunnebo Electronic Security 2007



Competence Centre Electronic Security
 Gunnebo Electronic Security
 23 route de Schwobsheim
 67600 Baldenheim
 France
www.gunnebo.com
www.smartintrusions.com

