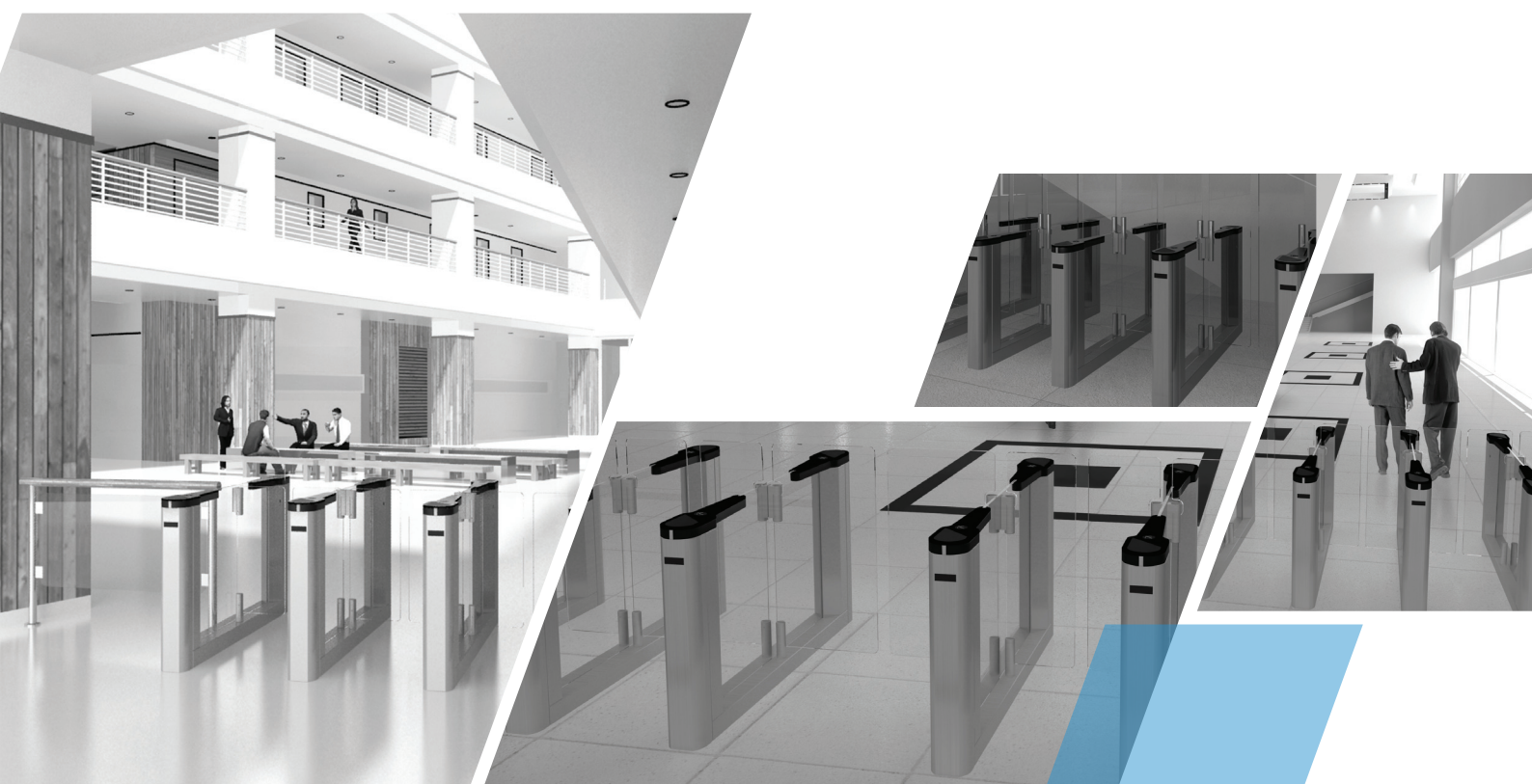


SPEEDSTILE FL

BA | EV



PRODUCT DATA



Smart Intrusion Solutions

www.smartintrusions.com

SPEEDSTILE FL

Flap Leaf Speed Gate for Internal Installation

Motorised flap leaves

Transparent design and effective barrier performance in a small footprint. For sites where limited space is required and aesthetics are still a must. Quiet and smooth in operation, this Gunnebo Speed Gate is available in the BA finish with anodised aluminium silver (black for EV finish) colour lid. Applied film selection is available as option. Both versions are available with a selection of leaves widths and heights and many other customisation options.

Applications include Leisure, Government, Finance, Banking, Retail, Telecommunications, Information Technology, Publishing, Education....

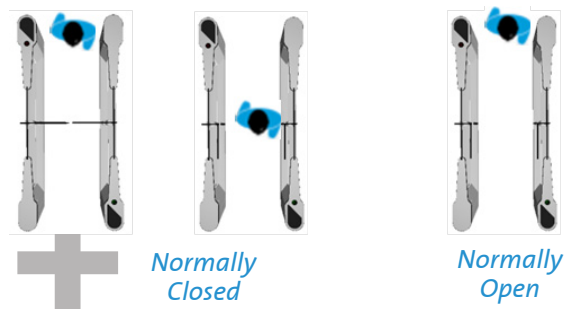
MODE OF OPERATION

Passage in one or both directions electronically controlled. On receiving a signal from the access control system, or remote control, the flap leaves open (Normally Closed NC). If an unauthorised person tries to tailgate or attempts to enter from the opposite direction, the in-built alarm system is activated. If within the pre-set timeout no passage has occurred, the lane will close and reset.

Normally Open N/O provides an open walkway in rest position and will only close at unauthorised entry or tailgating attempts.

Normal Use
(steady)

Alarm Conditions
(flashing)



Green arrow
Authorized use or
designated free passage
Proceed through the unit

Emergency / Fire exit

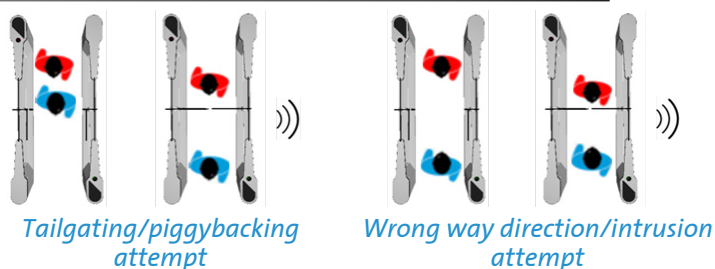
Red cross
(Unit in use or no passage)
Passage not authorised

Alarm, fraudulent
condition or technical
alarm

Standard	•	•	•	•	•	•	○	○			○
Wide	•	•	•	•	•	•	○	○	•	•	•

Plain dot indicates the functionality is implemented, empty dot indicates with some limitations, no dot indicates not available.

SECURITY FEATURES



Fraud Detection through sophisticated and proven algorithm

- Intrusion
- Tailgating
- Piggybacking
- Wrong way direction
- Leave aisle timeout
- Anti-crawling flap leaf barrier



SAFETY FEATURES

- Safety force sensing
- Safety light curtain (option)
- Accurate presence sensing
- Emitter/receiver infrared sensors technology
- Logic voltage 24 Vac

- Voltage free contact input for Fire Alarm fail state
- Fail-Safe manual push opening
- Fail-Safe via battery back-up opening (option)
- Wide walkway for wheel chair or easier access
- Accompanied wheelchair or Child passage management

For security and safety reasons children must be supervised by an adult at all times in the vicinity of an active lane.
Any child being escorted through the lane must always precede the accompanying adult during passage.

FL
SPEEDSTILE

DESIGN / CONSTRUCTION

Available versions are the BA with Stainless Steel 304 grade construction and the EV with applied film on the aluminum lid.
Available cabinet design construction (for both versions):

1.0m height
1.2m height
1.8m height

Standard passage way 600mm and **Wide** passage (900mm) available. Available also as **Combi** - centre cabinet with narrow (600mm) passage in one side and wide (900mm) passage on the other side

Available optional 50mm diameter LED display pictogram and LED way-mode indicators flush mounted within the lid surface, with illuminated symbols.



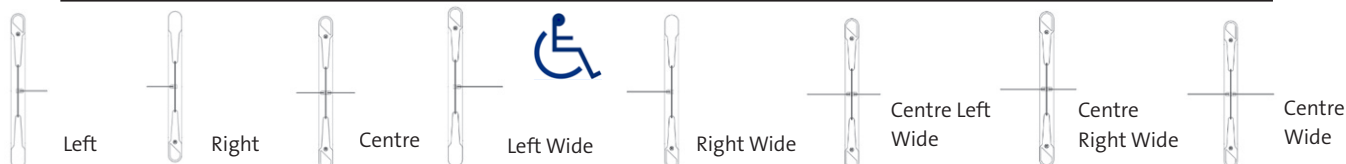
Green Arrow



Red Cross

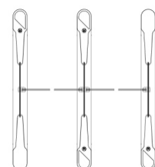


Green Card

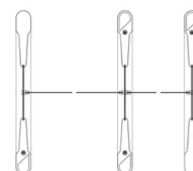


In order to create a lane it is necessary to have one right and one left cabinet. To create more than one lane, use one or more centre or combi cabinets. Select cabinets according to the number of lanes and passage width desired.

Two lane configuration comprising of 1N°L, 1N°C and 1N°R cabinets



Two lane configuration comprising of N°1 LW, 1N°CLW and 1N°R cabinet.



FINISHES

BA and EV versions share the same chassis, plinth and end leg posts and rotor column finishing in 304 grade stainless steel and toughened laminated glass inlay 13.5mm thick, leaves 10mm toughened glass.

Standard finishes further comprise:

Lid, optional finish

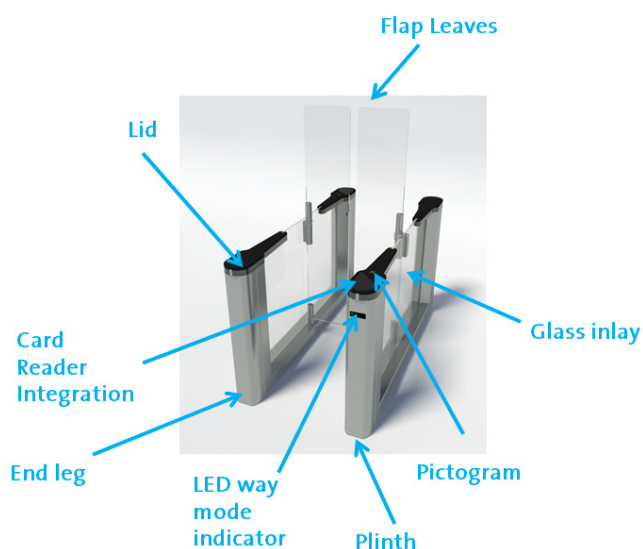
Applied film selection and more available for both BA and EV models.

BA

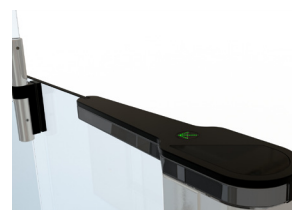
Anodised aluminium silver

EV

Anodised aluminium black



SpeedStile FL EV lid detail



OPTIONS & ACCESSORIES

- Alternative finishes and materials
- LED way mode indicator
- Pictogram
- Light curtain safety kit
- Card reader integration
- Battery back-up
- Remote control systems

ACCESS SPECIFICATIONS

Flow rates by type of Reader (1)			Disabled Access	Emergency Egress
Insertion Type	Swipe	Proximity		
20 PASSAGES / MN	30 PASSAGES / MN	40 PASSAGES / MN	● (2)	● (3)

(1) Approximate figures

(2) 900mm net passage way and algorithm able to manage wheelchair access

(3) In the event of a power failure the flap leaves will remain in the current position.

ELECTRICAL DATA & CONDITIONS OF USE

Power Supply	Power Rating	Battery Back-up	Fire Signal	Operating Temperature	IP Rating	Noise Level
230VAC 50HZ(1)	120VA STAND BY 300VA IN OPERATION	FOR 1 LAST OPERATING CYCLE (2)	INPUT FOR VOLTAGE FREE CONTACT	+5°C TO +40°C RH 95% NO CONDENSING	IP20	LESS THAN 55dB(3)

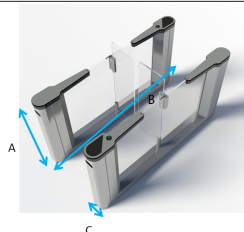
(1) 115Vac 60Hz also available

(2) Option

(3) Note: Average background noise in office environment is 50-55dB

DIMENSIONS & WEIGHTS

	Overall Height	Passage Width	A Cabinet Height	B Cabinet Length	C Cabinet Width	Weight (kg)	
						Side Cabinet	Centre Cabinet
STANDARD 1000	1000	600	1000	1925	170	135	150
WIDE 1000	1000	900	1000	1925	170	137	154
STANDARD 1200	1200	600	1000	1925	170	140	160
WIDE 1200	1200	900	1000	1925	170	142	164
STANDARD 1800	1800	600	1000	1925	170	147	174
WIDE 1800	1800	900	1000	1925	170	149	178



dimensions in (mm), weight net (kg),
might require lifting equipment.
For details refer to installation detail drawings

INSTALLATION & MAINTENANCE

Product Delivery	Application	Site Preparation (1)	Cabling & Conduits (2)	Control Board Location	Systems Integration(5)	Maintenance Access	MTTR(3)	MCBF(4)
FULLY ASSEMBLED	INDOOR	FLAT & LEVEL FINISHED FLOOR +/- 5mm	THROUGH THE GROUND	IN MASTER SPEEDSTILE CABINET	27 DIGITAL INTERFACE I/O RS232 RS485 SETTINGS PROGRAMMABLE VIA PARAMETERS	THROUGH END LEG PANEL	LESS THAN 30 MINUTES	4 MILLION (5 MILLION if NO - Normally Open)

(1) Bolting depth MIN 70mm, concrete MIN fckcube30N/mm2 resistance,

MIN 2000 x 500 x 150 mm deep

(2) Running MIN 140 mm below finished floor level, should rise MIN 50 mm from foundation

(3) Mean time To Repair

(4) Mean Cycle Between Failure

(5) Potential free contact for card reader input. New Electronic Platform with in-built RS485 and COM1 switching interface

It is the customer's responsibility to ensure the structural integrity and strength of the installation location.

Data provided is for information only, please refer to your usual Gunnebo Customer Service contact in order to prepare the installation site.

THE JOURNEY TOWARDS A SAFER WORLD STARTS AT THE ENTRANCE

CONTACT US FOR MORE INFO


www.smartintrusions.com


For a safer world